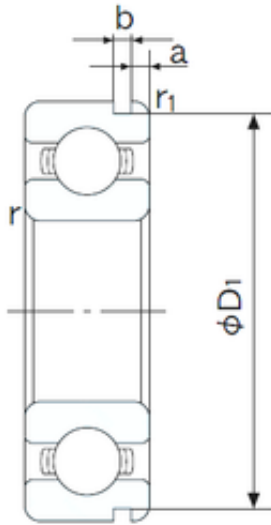




NTN BEARING CORP.



60 mm x 95 mm x 18 mm NACHI 6012N deep groove ball bearings

Bearing No. 6012N

6012N Bearing 2D drawings and 3D CAD models

Size	60x95x18 mm
Bore Diameter	60 mm
Outer Diameter	95 mm
Width	18 mm
d	60 mm
D	95 mm
B	18 mm
C	18 mm
a	2.87 mm
b	2.7 mm
r min.	1.1 mm
r1 min.	0.5 mm
D1	91.82 mm
Weight	0.403 Kg
Basic dynamic load rating (C)	29,4 kN
Basic static load rating (C0)	23,2 kN
(Grease) Lubrication Speed	7000 r/min
Bore Type	Cylindrical Bore
Enclosure	Open
Configuration	Single Row
Bore Size	60 mm
Outside Diameter	95 mm
Width	18 mm
Fillet Radius/Chamfer	1.1 mm
r1	0.5 mm



NTN BEARING CORP.

Groove Width	2.7 mm
Groove Diameter	91.8 mm
a (max)	2.9 mm
Dynamic Load Rating	29,400 N
Static Load Rating	23,200 N
Limiting Speed - Grease	7,100 rpm
Limiting Speed - Oil	8,500 rpm
Factor fo	15.5
Radial Clearance	0.008 to 0.028 mm
da (min)	66 mm
Da (max)	89 mm
Dx (min)	103 mm
ra (max)	1 mm
Cy (max)	5 mm