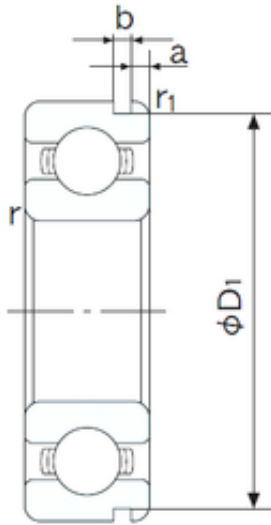




NTN BEARING CORP.



65 mm x 100 mm x 18 mm NACHI 6013N deep groove ball bearings

Bearing No. 6013N

6013N Bearing 2D drawings and 3D CAD models

Size	65x100x18 mm
Bore Diameter	65 mm
Outer Diameter	100 mm
Width	18 mm
d	65 mm
D	100 mm
B	18 mm
C	18 mm
a	2.87 mm
b	2.7 mm
r min.	1.1 mm
r1 min.	0.5 mm
D1	96.8 mm
Weight	0.413 Kg
Basic dynamic load rating (C)	30,5 kN
Basic static load rating (C0)	25,2 kN
(Grease) Lubrication Speed	6500 r/min
Bore Type	Cylindrical Bore
Enclosure	Open
Configuration	Single Row
Bore Size	65 mm
Outside Diameter	100 mm
Width	18 mm
Fillet Radius/Chamfer	1.1 mm
r1	0.5 mm



NTN BEARING CORP.

Groove Width	2.7 mm
Groove Diameter	96.8 mm
a (max)	2.9 mm
Dynamic Load Rating	30,500 N
Static Load Rating	25,200 N
Limiting Speed - Grease	6,700 rpm
Limiting Speed - Oil	8,000 rpm
Factor fo	15.7
Radial Clearance	0.008 to 0.028 mm
da (min)	71 mm
Da (max)	94 mm
Dx (min)	108 mm
ra (max)	1 mm
Cy (max)	5 mm