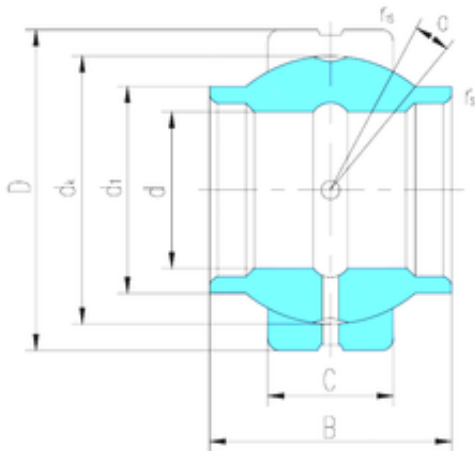




NTN BEARING CORP.

16 mm x 28 mm x 16 mm LS GEEW16ES-2RS plain bearings



Bearing No. GEEW16ES-2RS

Size	16x28x16 mm
Bore Diameter	16 mm
Outer Diameter	28 mm
Width	16 mm
d	16 mm
D	28 mm
B	16 mm
C	9 mm
d1	20 mm
dk	23 mm
r min.	0,3 mm
r1 min.	0,3 mm
Angle	4 °
Weight	0,034 Kg
Basic dynamic load rating (C)	17 kN

GEEW16ES-2RS Bearing 2D drawings and 3D CAD models