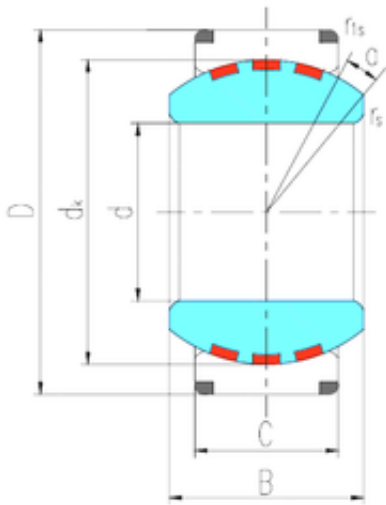




# NTN BEARING CORP.



220 mm x 320 mm x 135 mm LS GE220XF/Q  
plain bearings

Bearing No. GE220XF/Q

Size	220x320x135 mm
Bore Diameter	220 mm
Outer Diameter	320 mm
Width	135 mm
d	220 mm
D	320 mm
B	135 mm
C	100 mm
dk	275 mm
r min.	1,1 mm
r1 min.	1,1 mm
Angle	8 °
Weight	34,5 Kg
Basic dynamic load rating (C)	2750 kN

GE220XF/Q Bearing 2D drawings and 3D CAD models